

# DEMOLISHING MYTHS ABOUT AUTOMATING AN ANYWHERE ORGANIZATION

Automating the anywhere workforce can be much faster, easier, and less expensive than you think. That's because VMware has a solution built on industry-leading unified endpoint management, desktop and app virtualization, Secure Access Service Edge (SASE), and endpoint security technologies.

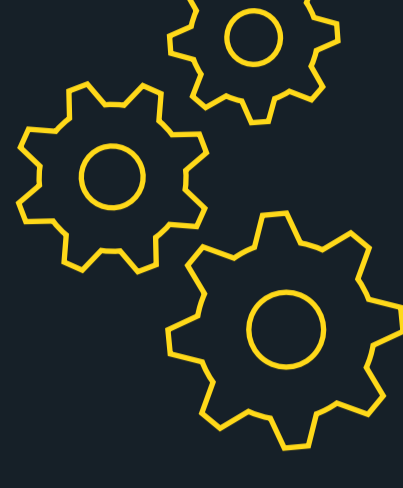


## MYTH

# 1

## AUTOMATION IS MORE TROUBLE THAN IT'S WORTH

Setup and maintenance are too complex, complicated, and time-consuming.



### TRUTH:

Automation enables IT teams to add value and ensure positive experiences for users, even as you save time, money and resources.

### HOW VMWARE HELPS

With VMware's optimized, intelligent workflows, IT teams consolidate tools, eliminate silos, lower operational overhead, and spend more time focusing on business outcomes. Getting started is a straightforward, three-step process:

- + Set policies to drive business outcomes.
- + Define SLAs and workflows.
- + Leverage unified intelligence to quickly identify, prioritize, and remediate automated actions.



## MYTH

# 2

## AUTOMATION MEANS GIVING UP CONTROL

Automation is an all-or-nothing proposition. It's impossible to choose what to automate and what not to automate. It also dooms you to vendor lock-in.

### TRUTH:

With a best-in-class automation solution, you maintain control over which workflows to automate. And it's easy to integrate other tools, technologies, and data sources.



### HOW VMWARE HELPS

With VMware, you define your own rules, and then scale them across hundreds of thousands of endpoints. IT retains control over the entire network, establishes SLAs, and automates actionable insights to ensure network health and app delivery.



## MYTH

# 3

## AUTOMATION IS ONLY FOR LARGE, COMPLEX ORGANIZATIONS

Automation requires deep expertise, and it's not worth the investment for most organizations.

### TRUTH:

Thanks to automation democratization, organizations of any size and complexity can benefit from an outcome-based approach.



### HOW VMWARE HELPS

Because VMware speeds, simplifies and unifies the automation lifecycle, IT can :

- + Provision endpoints in minutes, not days
- + Monitor KPIs, proactively discover issues, and quickly remediate issues.
- + Simplify WAN operations by automating configuration, monitoring, diagnosis, and management.

## MYTH

# 4

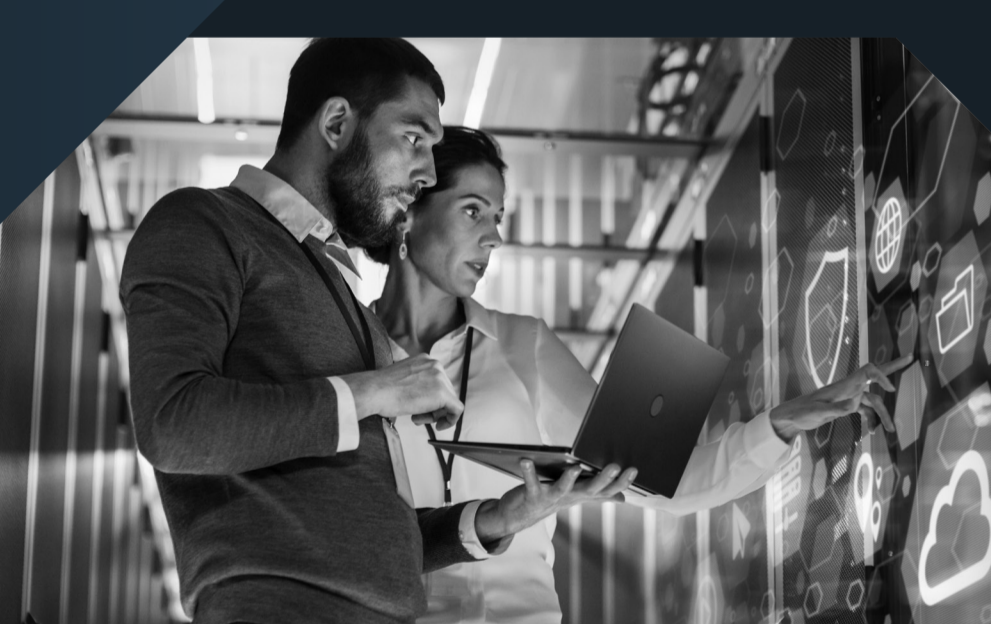
## AUTOMATION ALWAYS LAGS BEHIND

Rapid proliferation of personal devices, corporate devices, and apps make it impossible to keep up.



### TRUTH:

Automation enables you to keep pace with proliferation by speeding and simplifying data visibility, security, and management.



### HOW VMWARE HELPS

With VMware, you unify endpoint management across diverse environments within a single platform, including access control, application management and multi-platform endpoint management. You always bring remote and mobile users into the enterprise SD-WAN fabric securely, enabling Zero Trust networking at the device level.

## MYTH

# 5

## AUTOMATION IS EXPENSIVE

You have to purchase multiple point solutions and stitch them together, and still end up with a less-than-ideal solution.

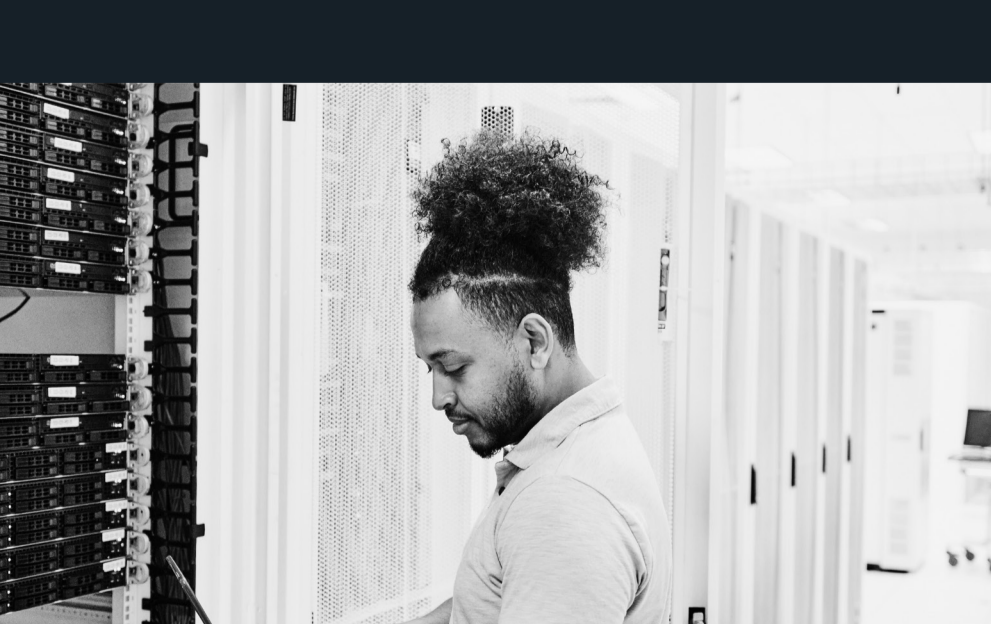
### TRUTH:

By unifying management in a single console and automating countless routine key tasks, automation is significantly less expensive than manually managing multiple siloed solutions.

### HOW VMWARE HELPS

By breaking down traditional silos and lowering IT complexity, VMware helps you drive down management costs by:

- + Simplifying processes through an outcome-based approach
- + Optimizing workflows, leveraging analytics for operationalization, and minimizing overhead through consolidation.



Learn how VMware technology and SHI expertise put innovation to work for you with cloud migration initiatives and more:

[seeinnovationatwork.com](http://seeinnovationatwork.com)

### POWER YOUR WORKLOADS, CLOUDS, AND DEVICES WITH THE SHI-VMWARE PARTNERSHIP

SHI and VMware have teamed up to offer you state-of-the-art technologies with expert strategy, deployment, integration, implementation, and management. With our technical expertise and guidance, you can speed up your business growth and realize your full potential.